

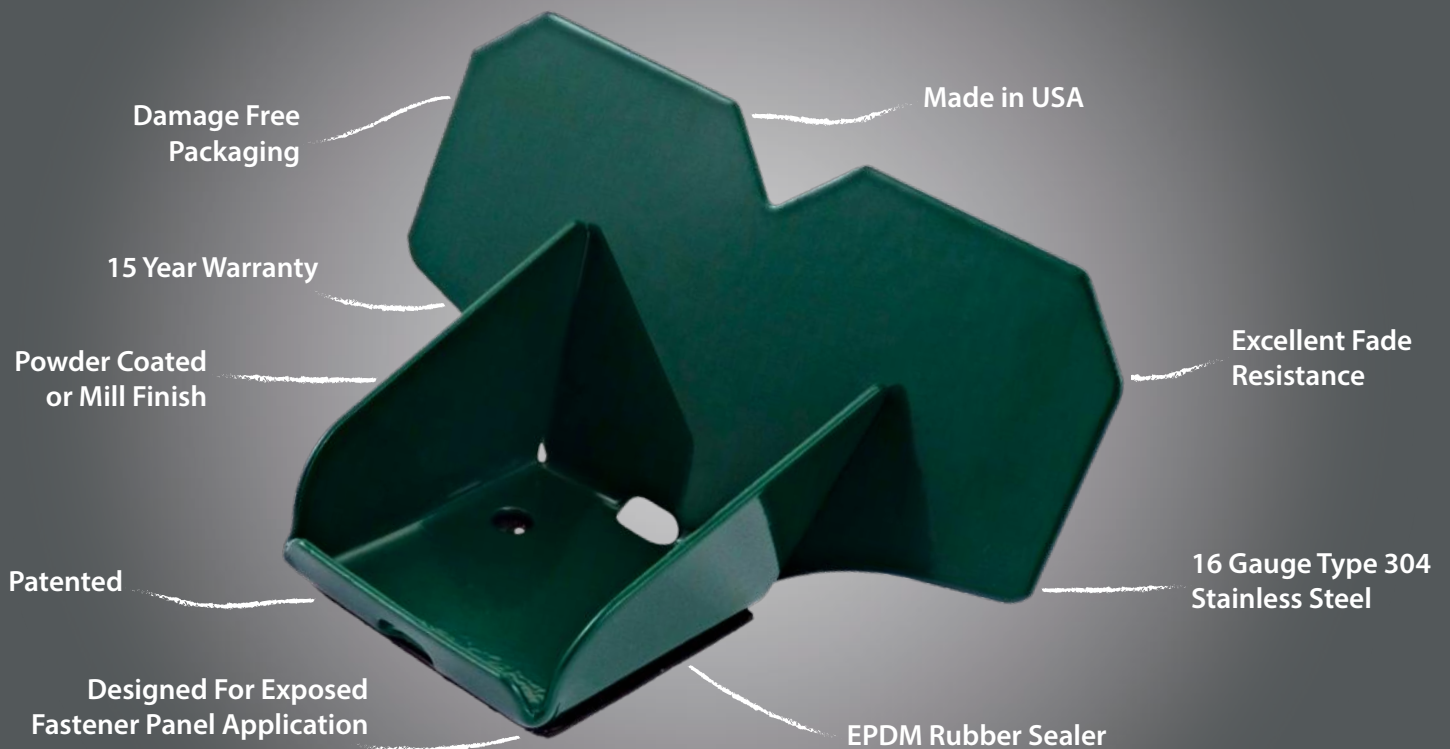
# SNOW DEFENDER®

1500



The Snow Defender® 1500 is designed for use with an exposed fastener panel on 2×4 purlins in the upright position or on 2×4 purlins in the flat position.

The 1500 has an EPDM rubber seal, so it makes for an effortless install — you only need the snow guards and screws, no extra caulk required. It's designed for narrow purlins or steel building Z's. The screw pattern allows for fastening into a purlin on edge. It also comes in 40+ colors so you are able to match any metal roof color needed.

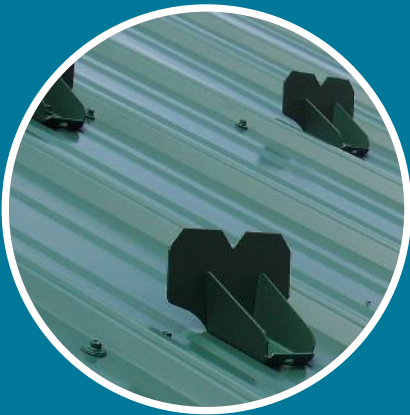


# SNOW DEFENDER®

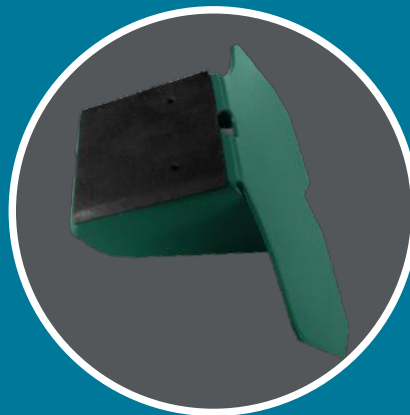
1500



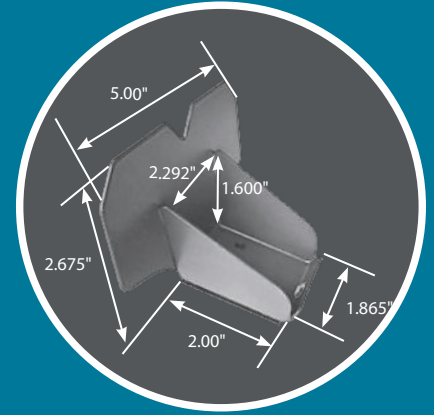
Item #	Description	Pcs/Bx	Lb/Bx
SD15	Snow Defender® 1500	50	19.4



Use For Exposed Fastener Panels



EPDM Washer



Innovative Design

## Also Available:



SNOW DEFENDER®  
4500



SNOW DEFENDER®  
6500



SNOW DEFENDER®  
7500 DECO™



SNOW DEFENDER®  
85RF DECO™